



UMS/ UHS Campus Land Use  
Potential Phasing/ Options  
02.18.20

# Existing





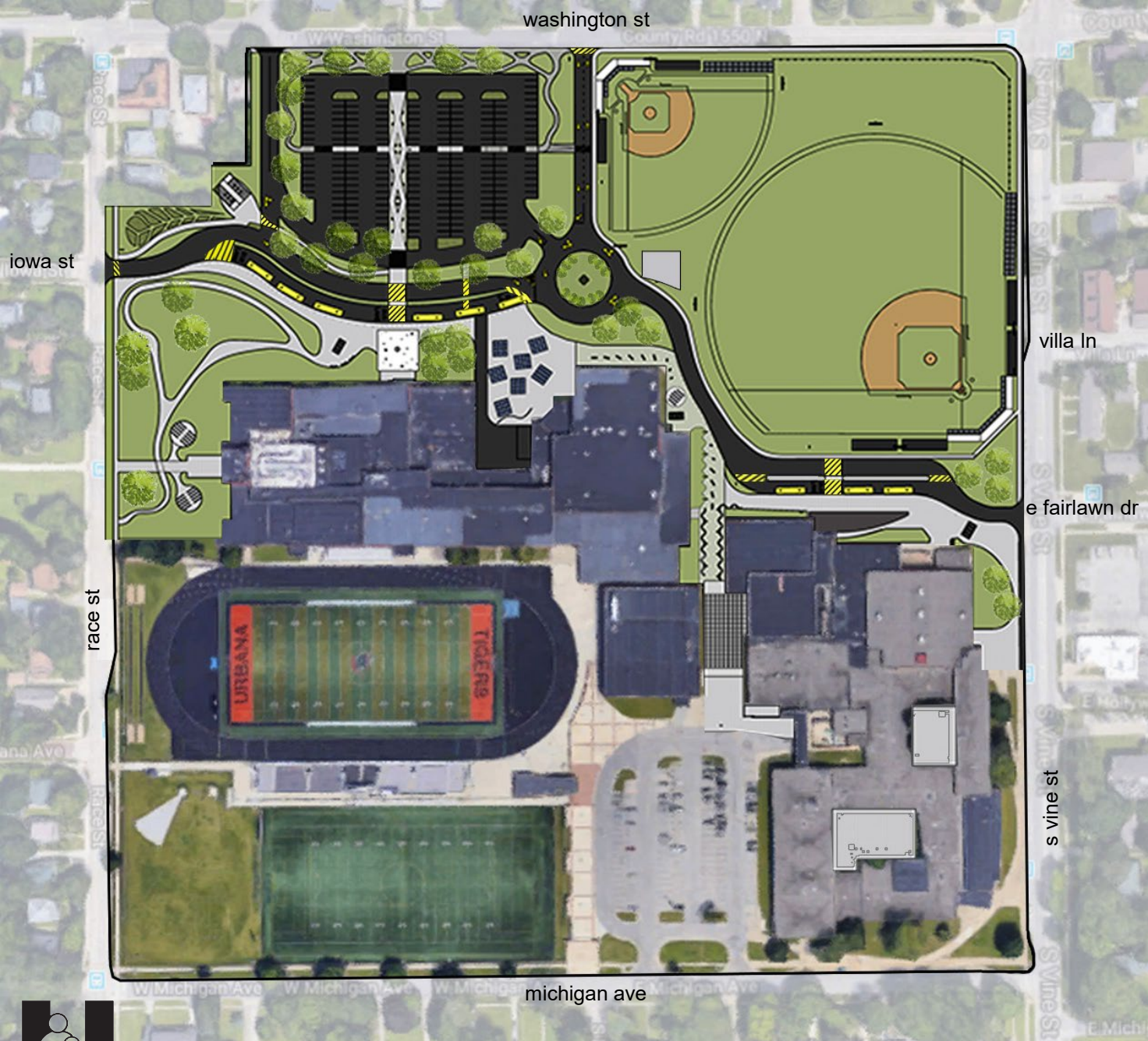
# Improvements

## Potential Phasing – North Campus

1. Vehicular Access
- 2a. North Campus Access/Parking
- 2b. UHS Entry Presence
- 2c. Tiger Lane Gateway
- 2d. Educational Garden
- 2e. North Learning/Storage
- 2f. West Outdoor Learning
3. Baseball
4. Softball

## Individual Options

1. Roofed Courtyards
2. Service Enclosure
3. Streetscaping/ Atrium
4. Campus Entry
5. Bleacher Storage/Concessions

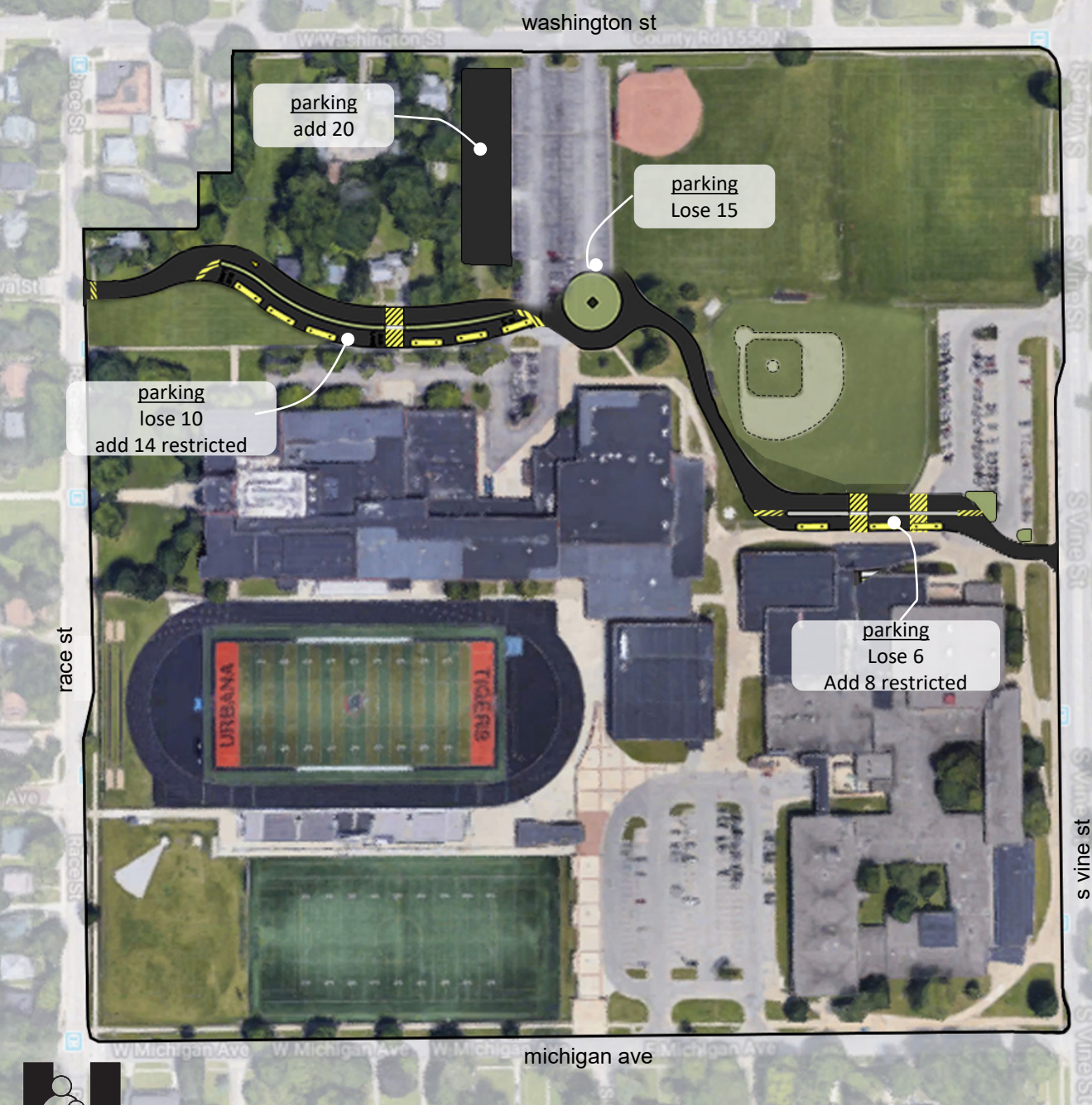




# 1. Vehicular Access

*Preliminary Hard Cost Estimate: \$2,800,000*

- New East/ West bus and car route
- City traffic coordination
- Compensatory storm drainage
- Campus monument (potential option)
- Truncated baseball
- Additional north parking





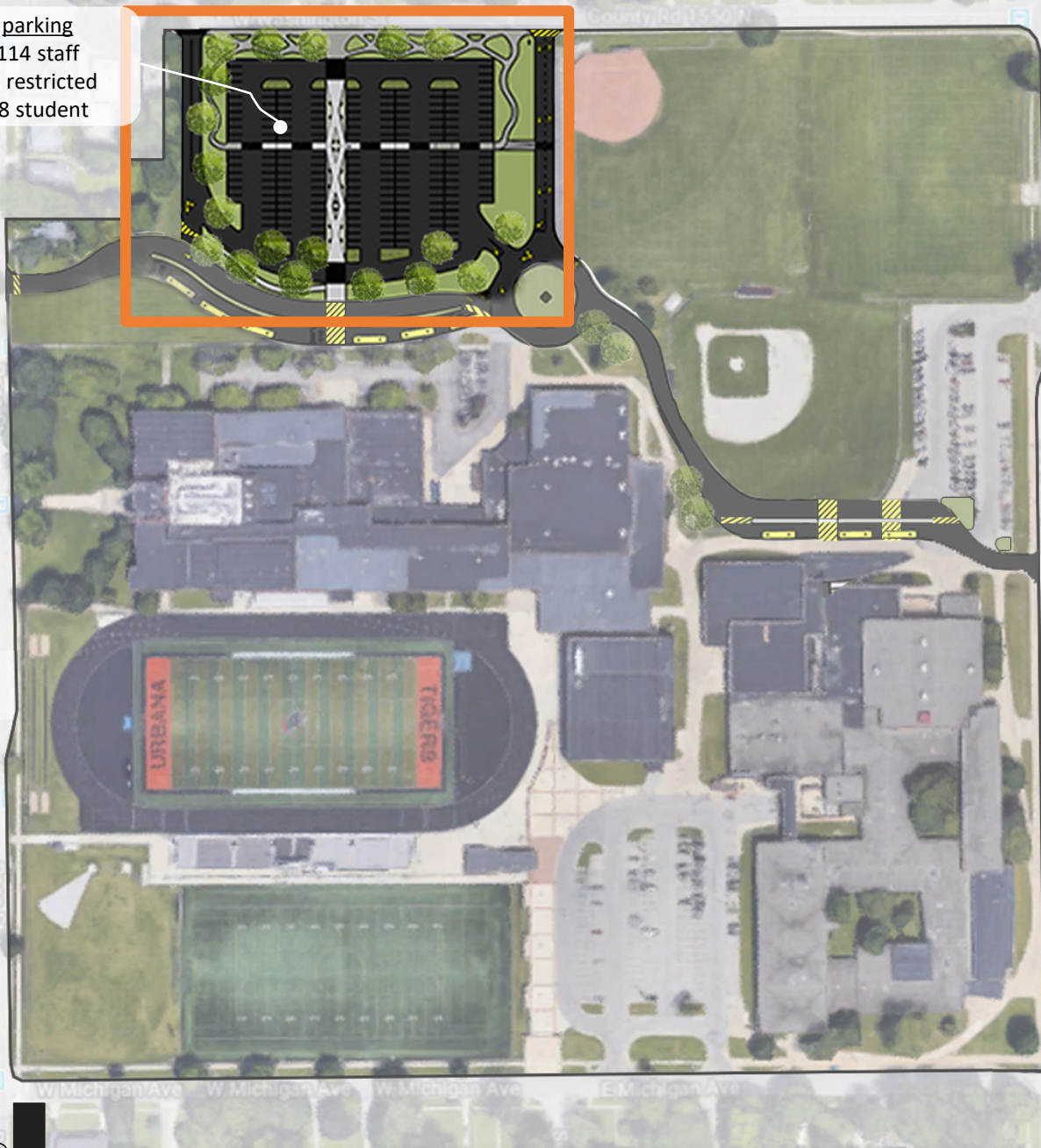
## 2a. North Campus Access/ Parking

*Preliminary Hard Cost Estimate: \$2,250,000*

- Demolition of district owned houses
- Completes northern access
- Removes visitor parking
- Compensatory storm drainage
- City traffic coordination
- Lit parking and pathways
- Wayfinding signage



parking  
114 staff  
15 restricted  
78 student

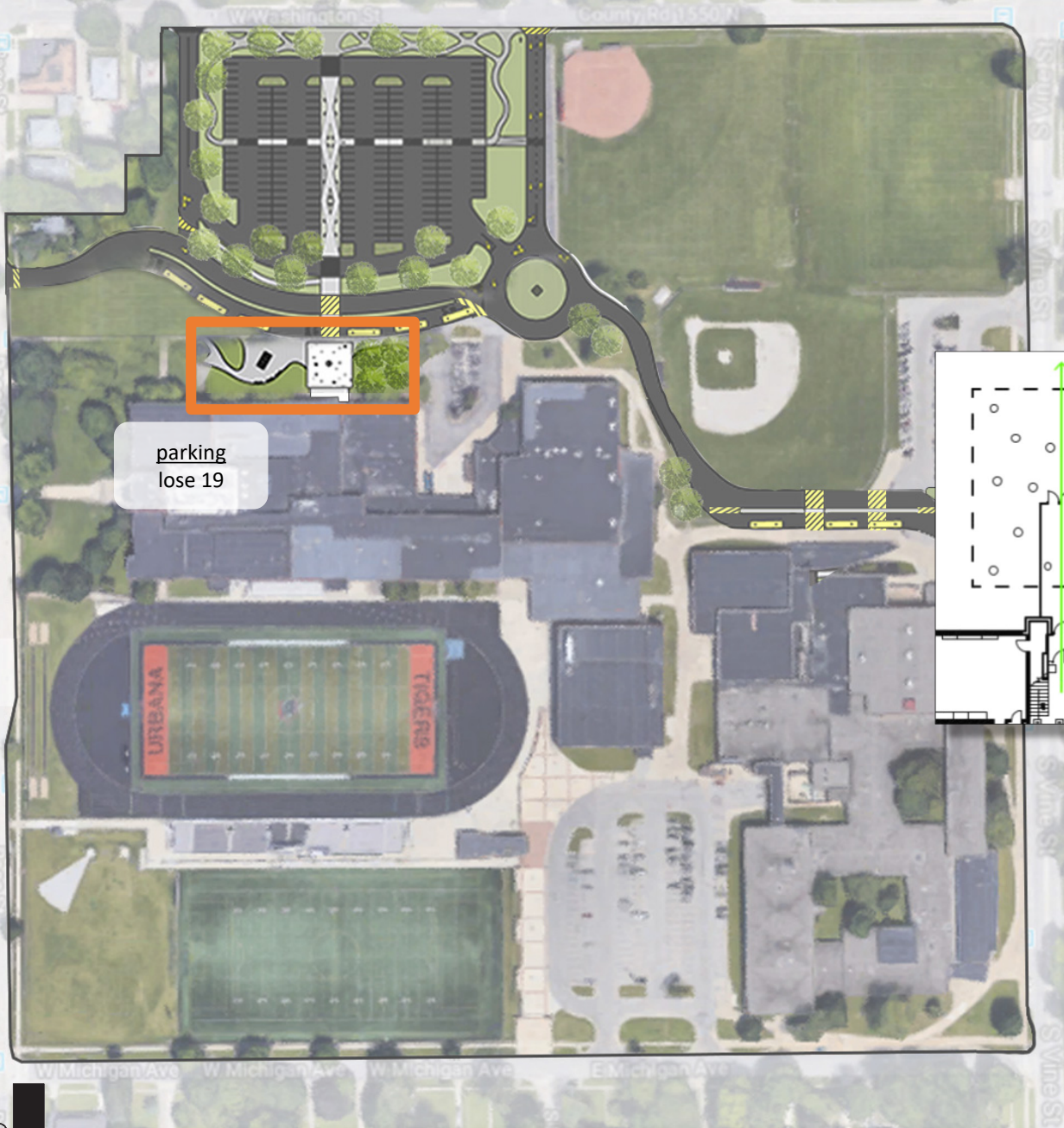




## 2b. UHS Entry Presence

*Preliminary Hard Cost Estimate: \$515,000*

- Entry canopy
- Bicycle rack canopies
- Removes visitor parking
- Secure door 1 entry/ attendance office relocation

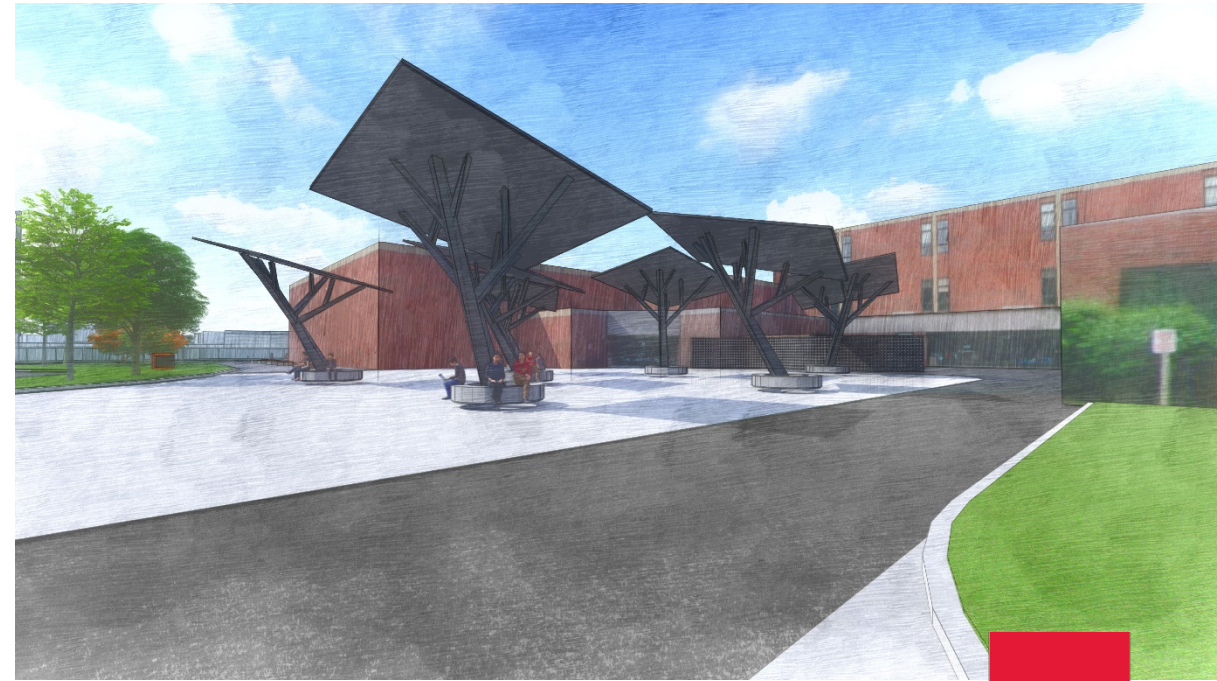
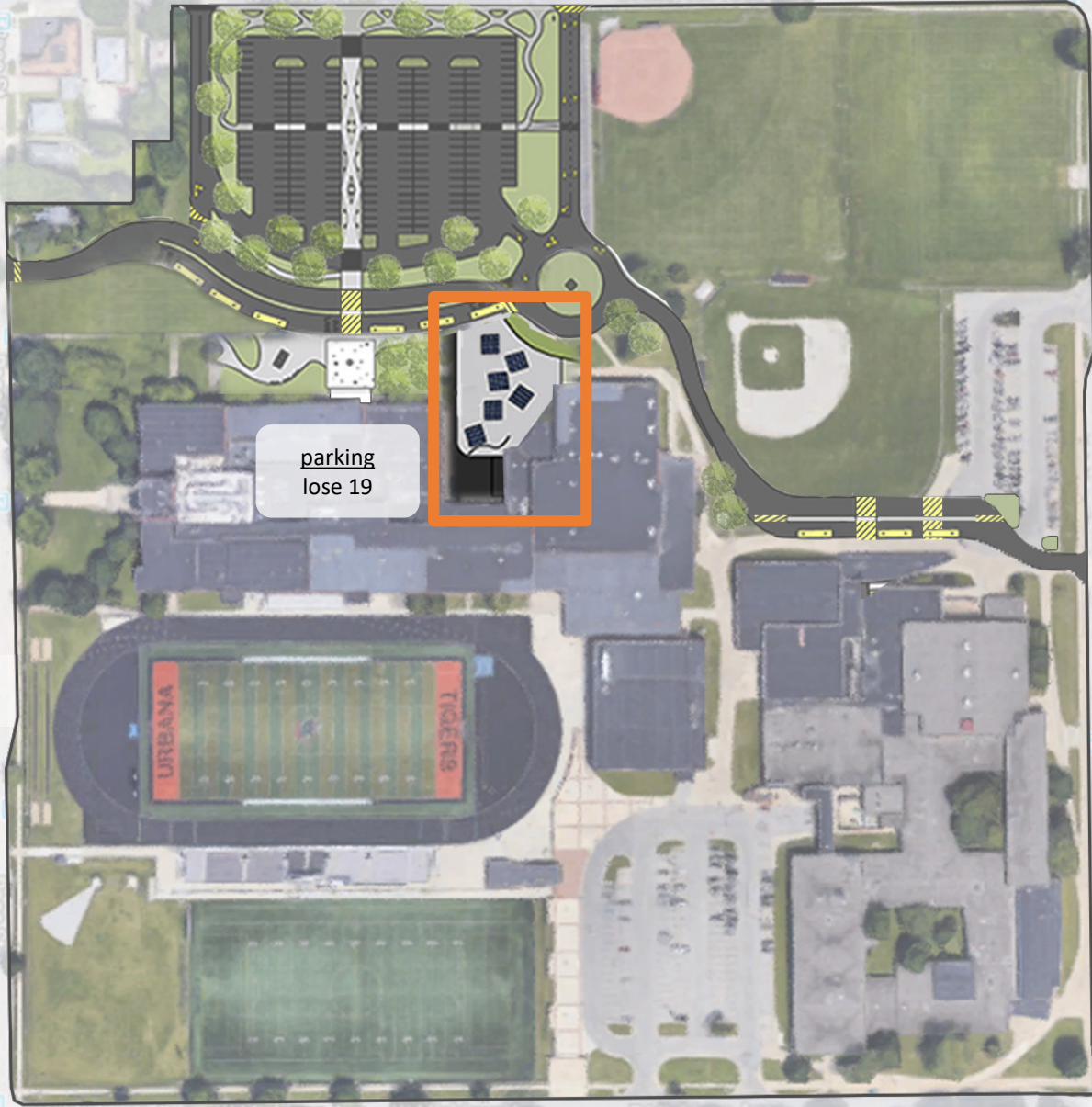




## 2c. Tiger Lane Gateway

*Preliminary Hard Cost Estimate: \$450,000*

- Removal of non-service vehicular traffic
- Solar “tree” canopies with group seating
- Exterior ante-space for athletics
- Permeable pavement
- Visual blocking of service entities
- Health center access relocation





## 2d. Educational Garden

*Preliminary Hard Cost Estimate: \$40,000*

- Requires residence demolition
- Lit pathway bollards
- All weather planters





## 2e. North Learning/ Storage

*Preliminary Hard Cost Estimate: \$30,000*

- Shipping containers for storage/ pavilion structure
- Site lighting
- Permeable concrete/ pavers to avoid stormwater
- All weather benches

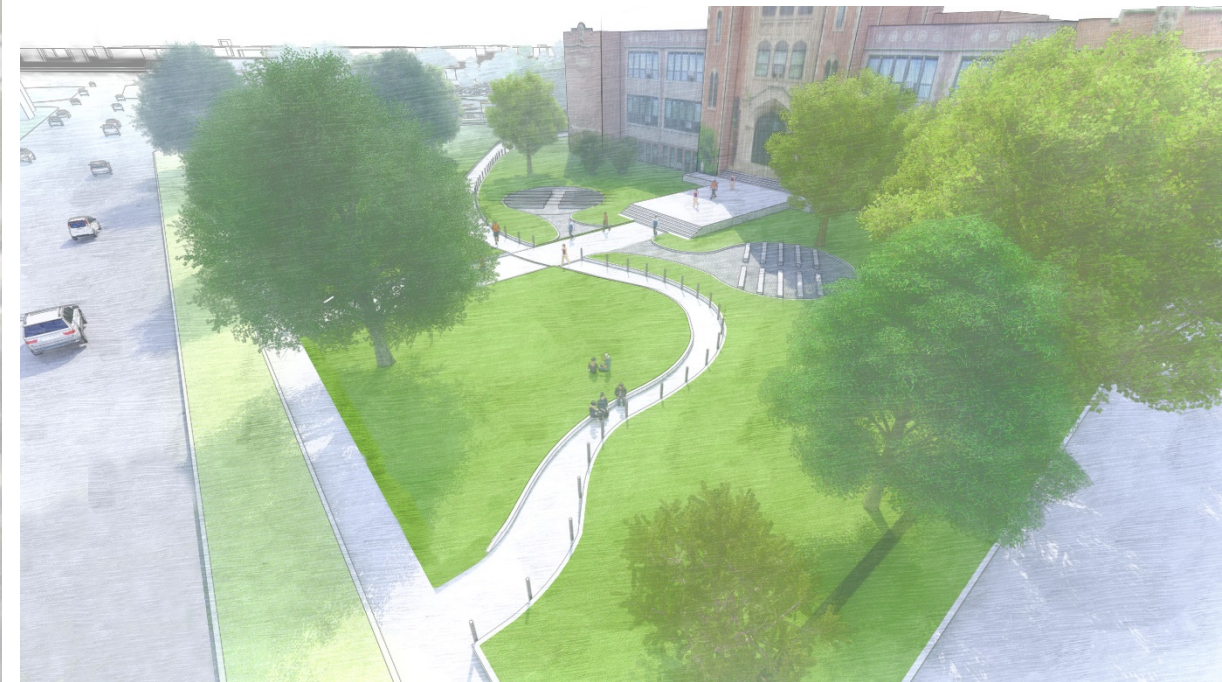
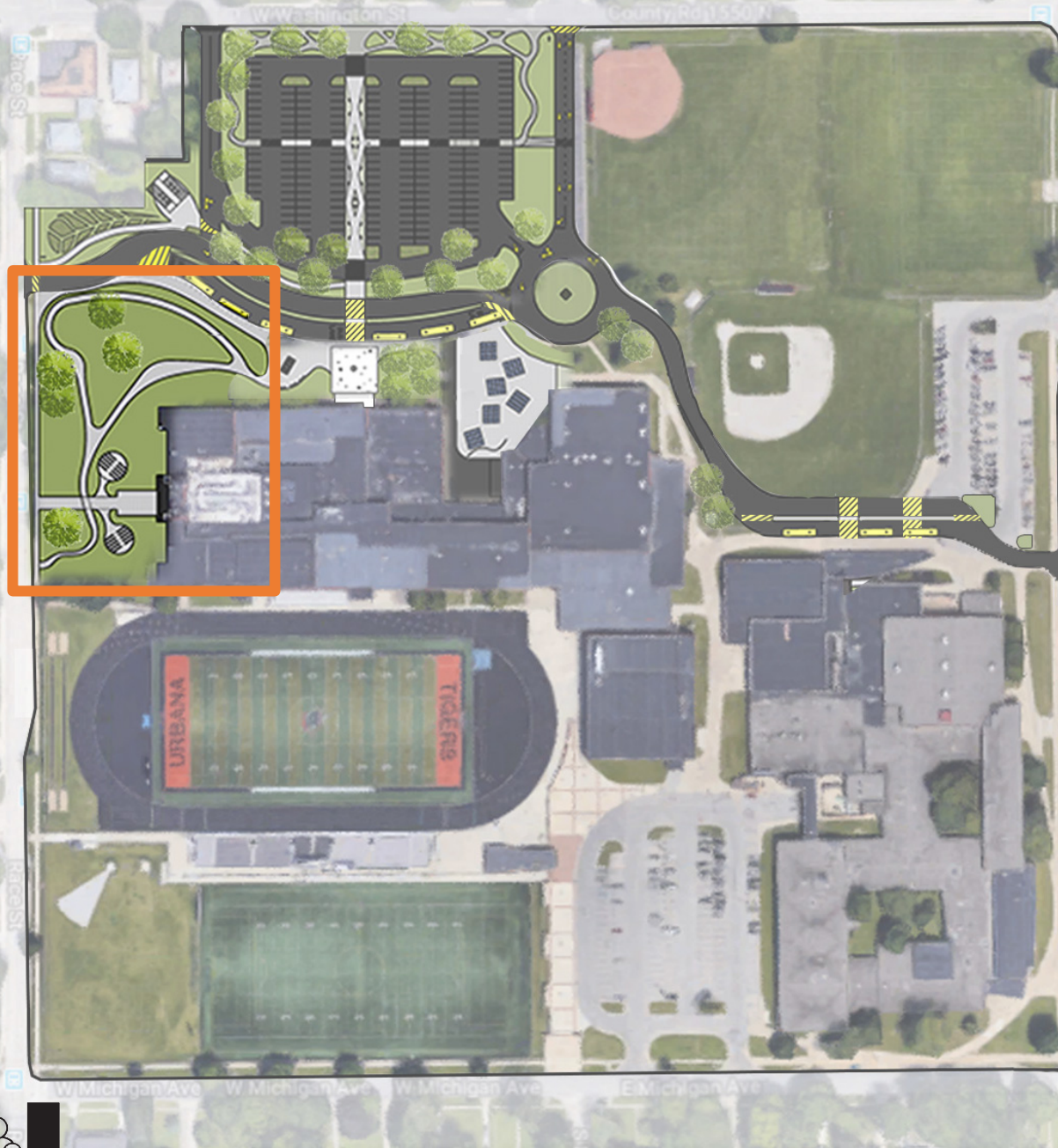




## 2f. West Outdoor Learning

*Preliminary Hard Cost Estimate: \$50,000*

- All weather bench seating
- Lit pathway bollards/ seating
- Permeable concrete/ pavers to avoid stormwater
- Relocate marquee signage

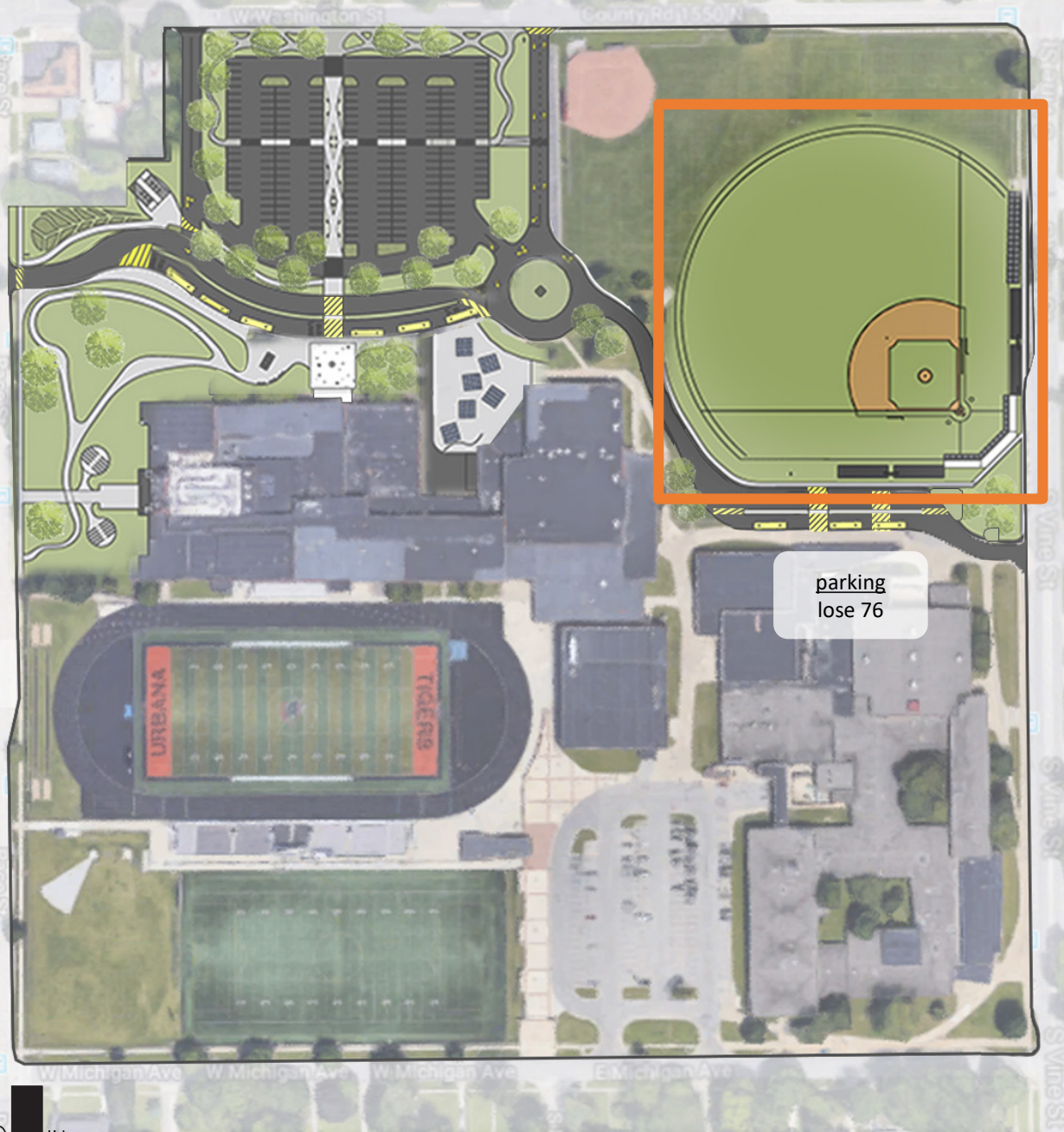




# 3. Baseball

*Preliminary Hard Cost Estimate: \$1,850,000*

- New competition baseball facilities and amenities
- Removal of middle school north parking

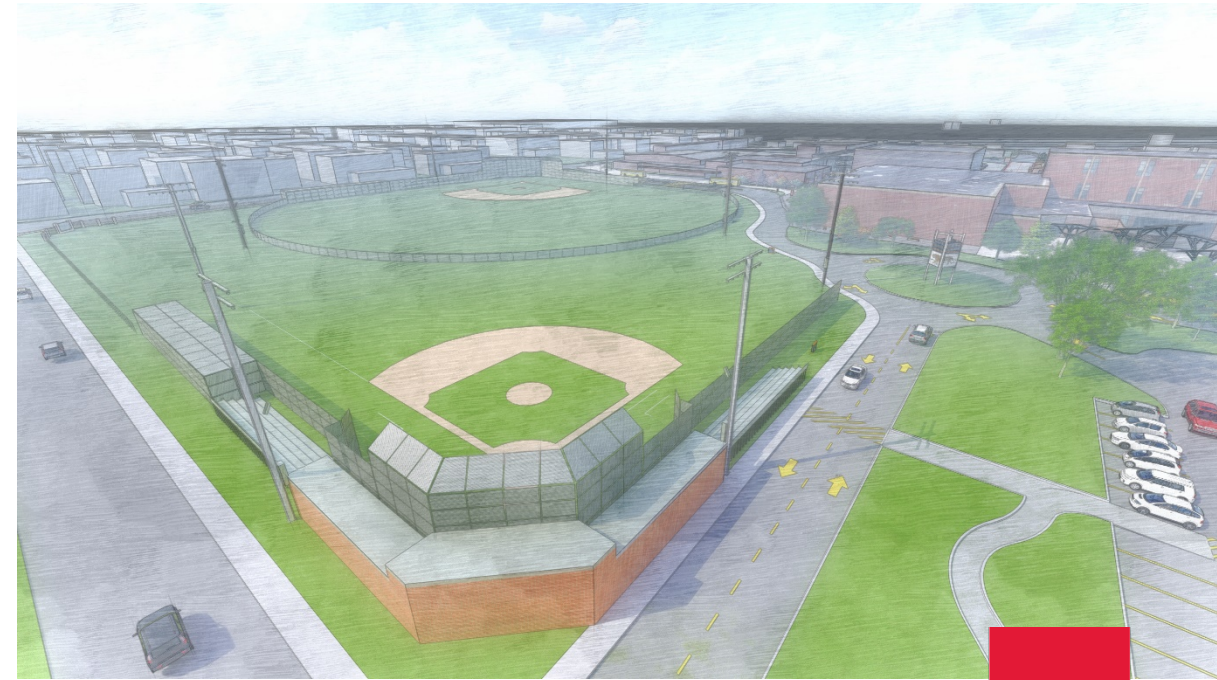
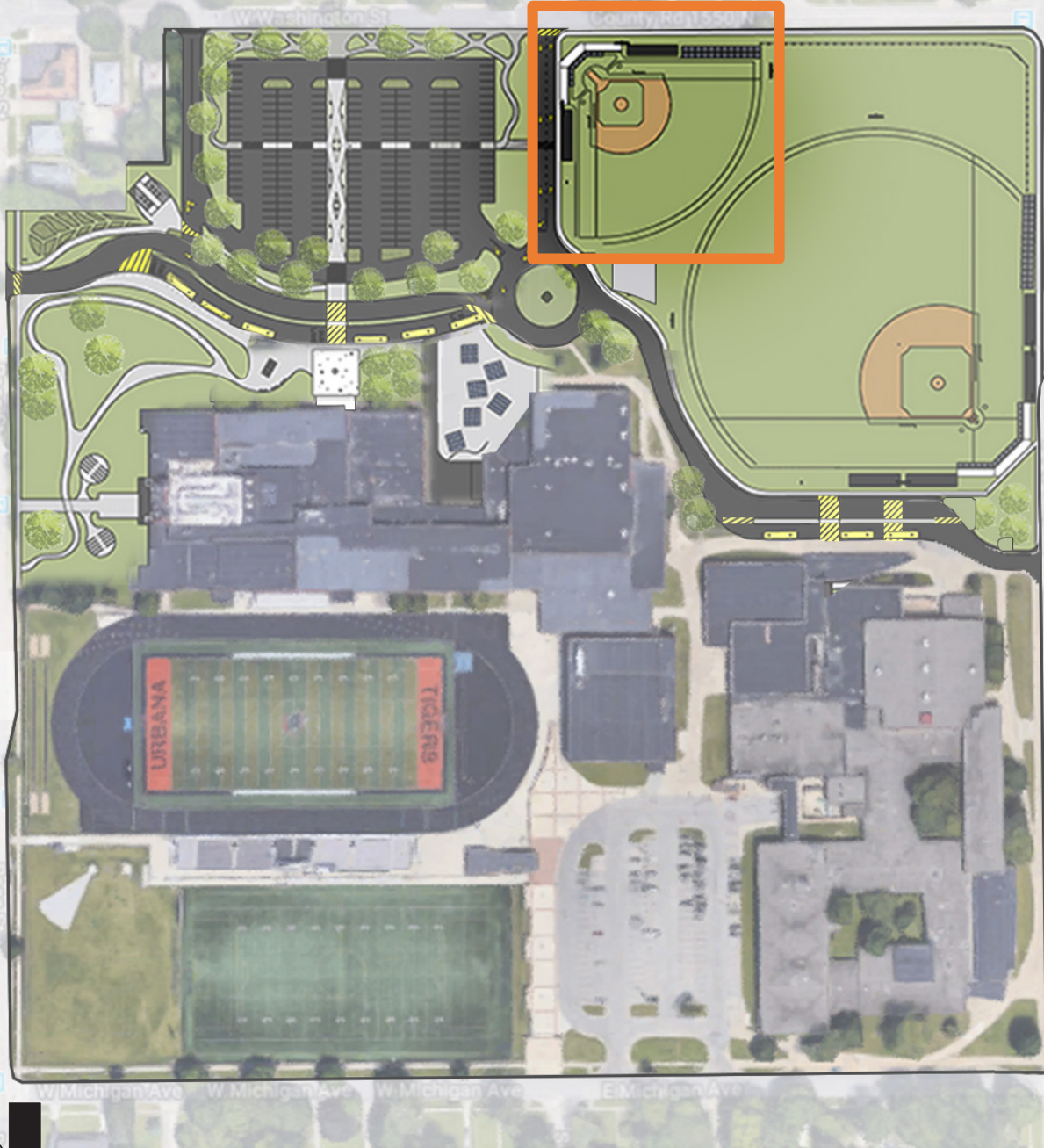




## 4. Softball

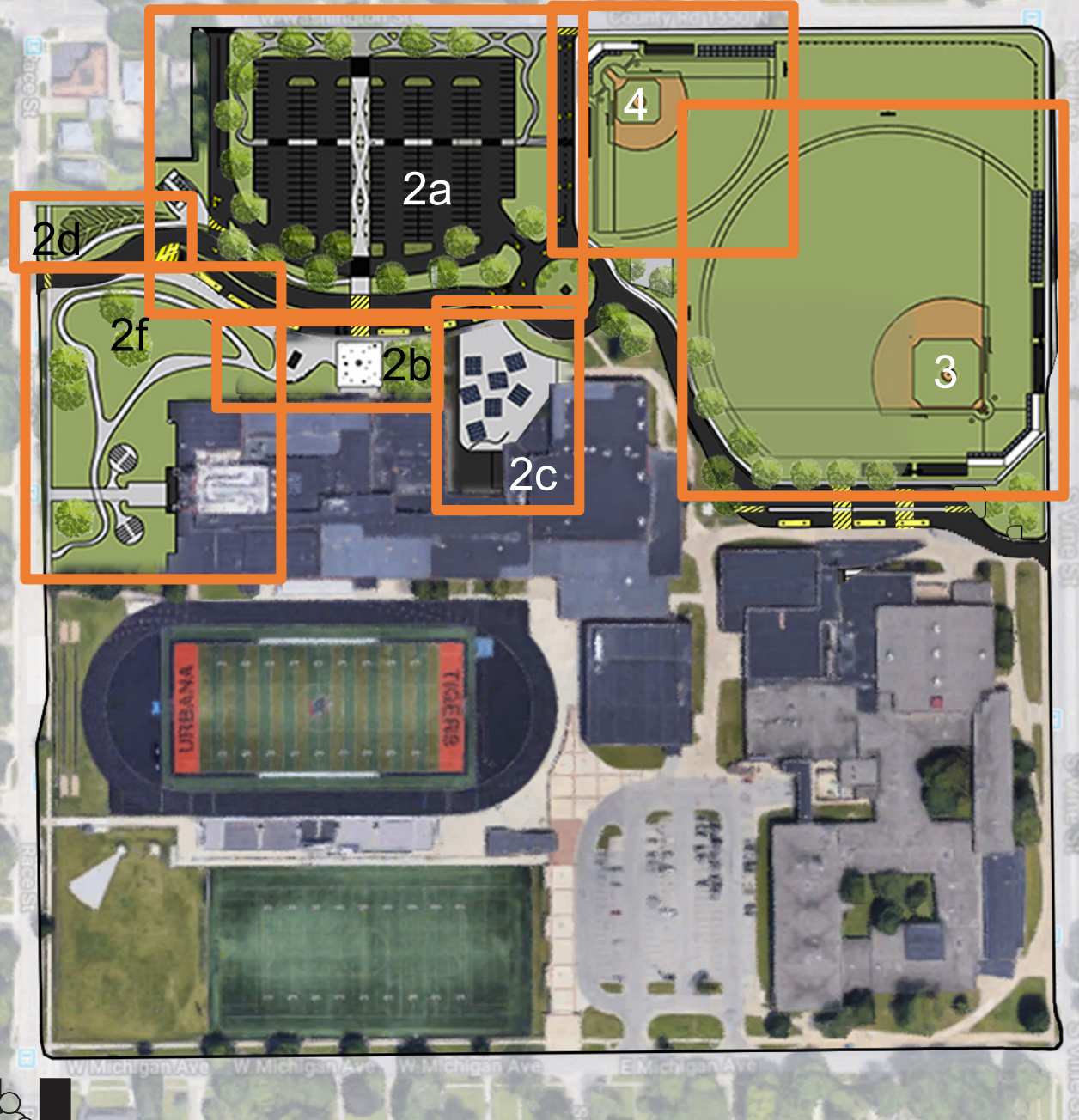
*Preliminary Hard Cost Estimate: \$1,350,000*

- New competition softball facilities and amenities





# Potential Phasing – North Campus Improvements



1.	Vehicular Access	\$2,800,000
2a.	North Campus Access/Parking	\$2,250,000
2b.	UHS Entry Presence	\$515,000
2c.	Tiger Lane Gateway	\$450,000
2d.	Educational Garden	\$40,000
2e.	North Learning/Storage	\$30,000
2f.	West Outdoor Learning	\$50,000
3.	Baseball	\$1,850,000
4.	Softball	\$1,250,000

Preliminary Hard Cost Estimate: **\$9,335,000**



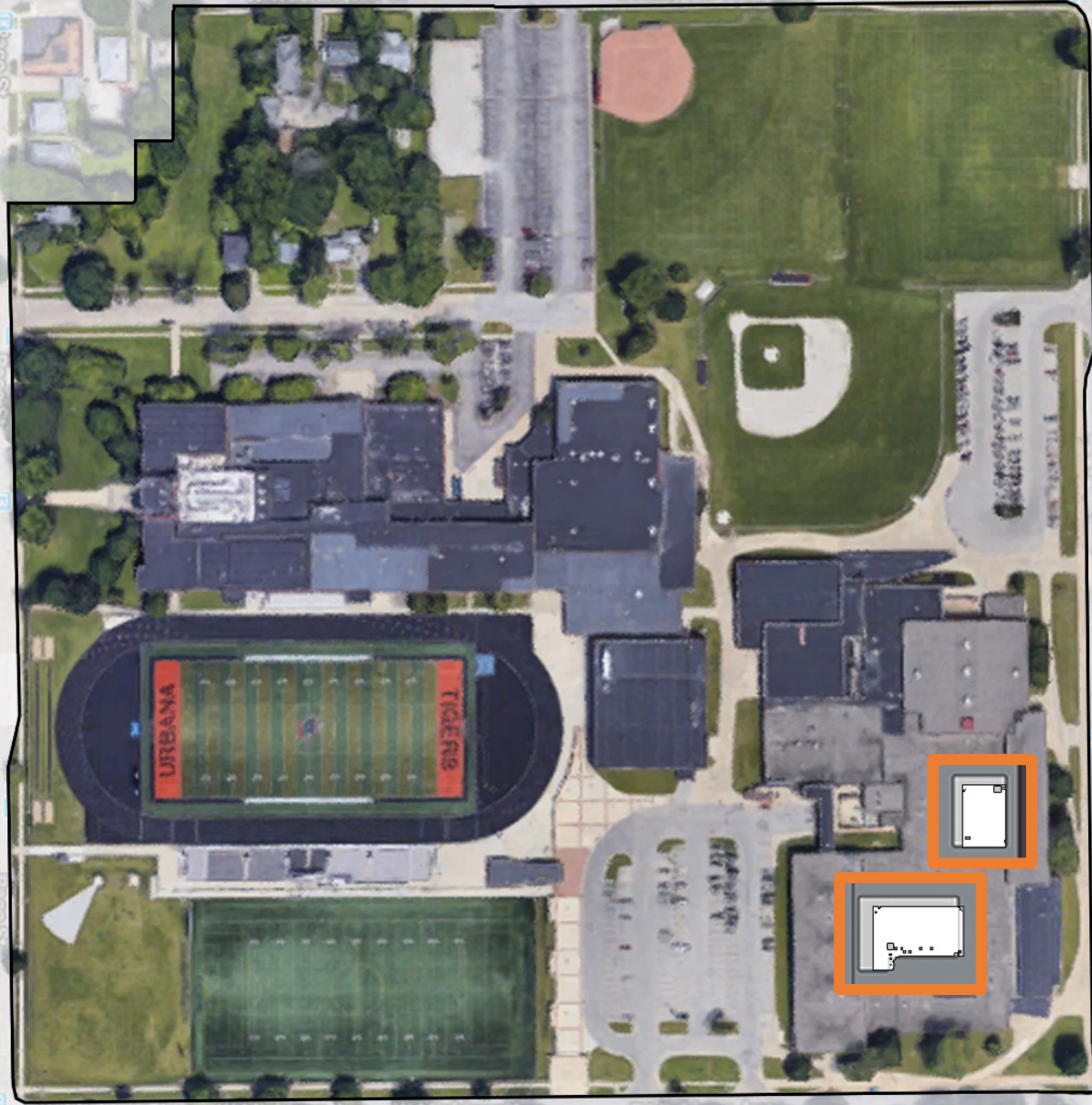
# 1. Roofed Courtyards

*Preliminary Hard Cost Estimate:*

*North - \$795,000*

*South - \$1,275,000*

- Combination of clerestories/ skylights
- Existing exterior wall renovations
- Potential egress modifications
- Requires compensatory drainage
  - North Courtyard – 5,300 sf
  - South Courtyard – 8,500 sf

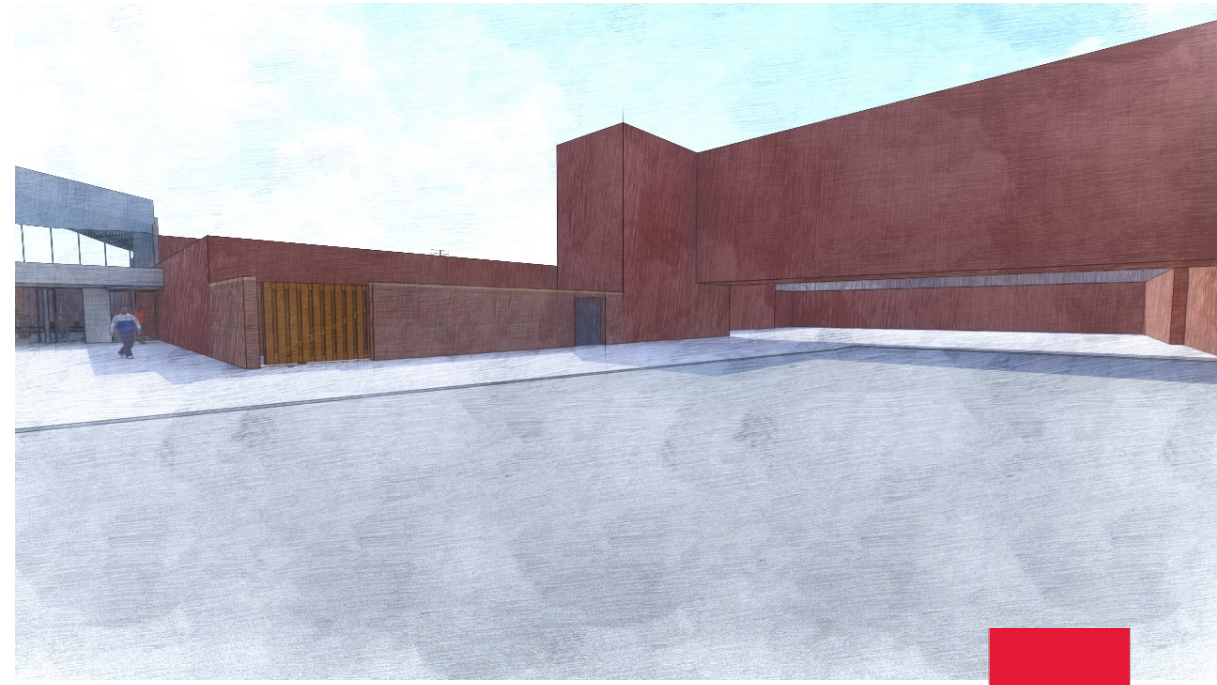




## 2. Service Enclosure

*Preliminary Hard Cost Estimate: \$70,000*

- Masonry walls with gates
- Cleaning of existing masonry
- Hardscaped sitework





### 3. Streetscaping/ Atrium

*Preliminary Hard Cost Estimate: \$5,700,000*

- New glass enclosed area: 8,000 sf
- Assembly/ STEAM/ educational collaboration/ Extra-curricular space
- Gathering promenade

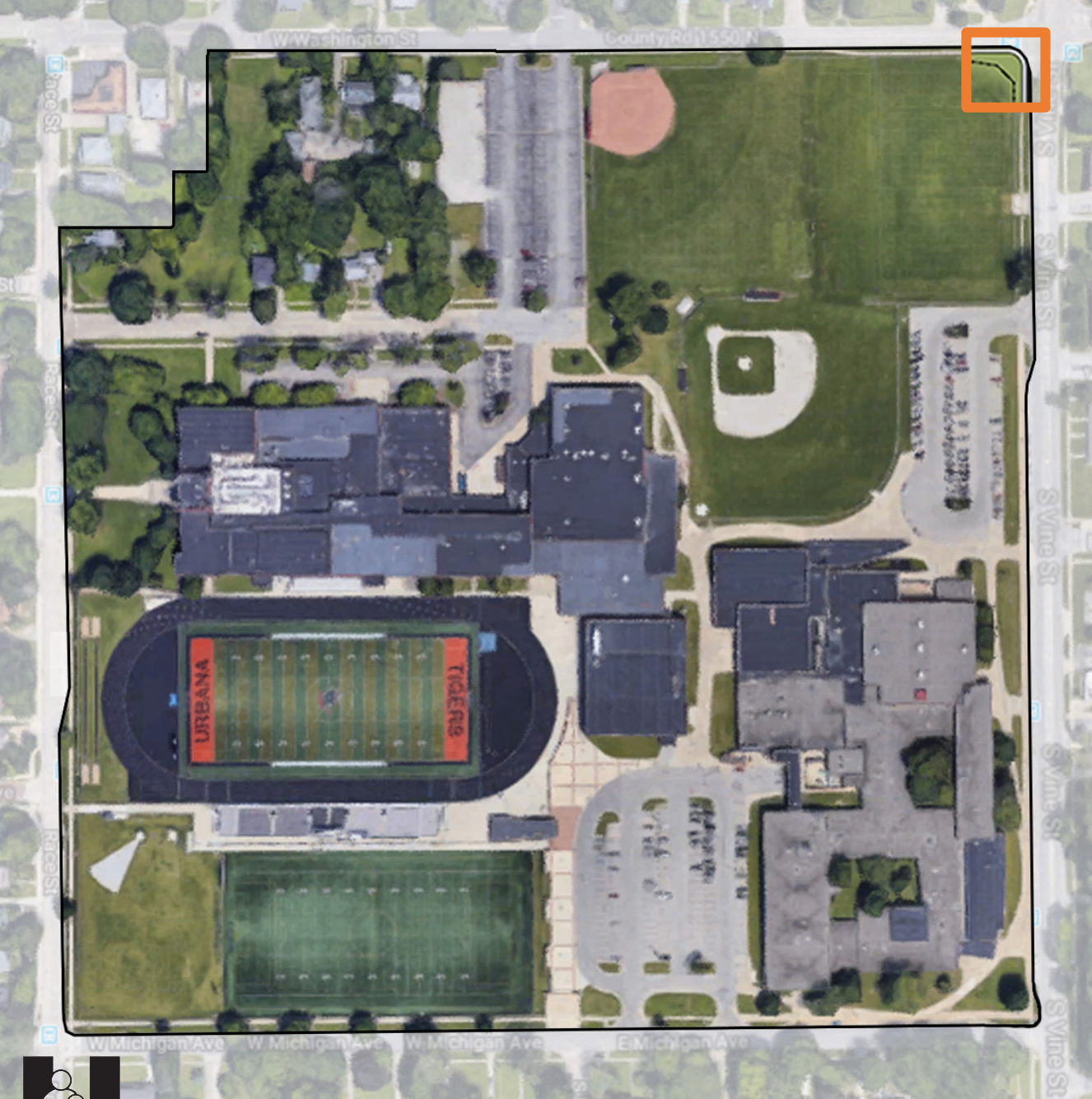




## 4. Campus Entry

*Preliminary Hard Cost Estimate: \$60,000*

- Masonry monument LED marquee sign
- Aluminum fencing and masonry piers





## 5. Bleacher Storage/ Concessions

*Preliminary Hard Cost Estimate: \$225,000*

- Enclose “open” areas underneath bleachers for secure equipment storage ~1,000sf
- Add additional concessions area to alleviate congestion ~1,000 sf

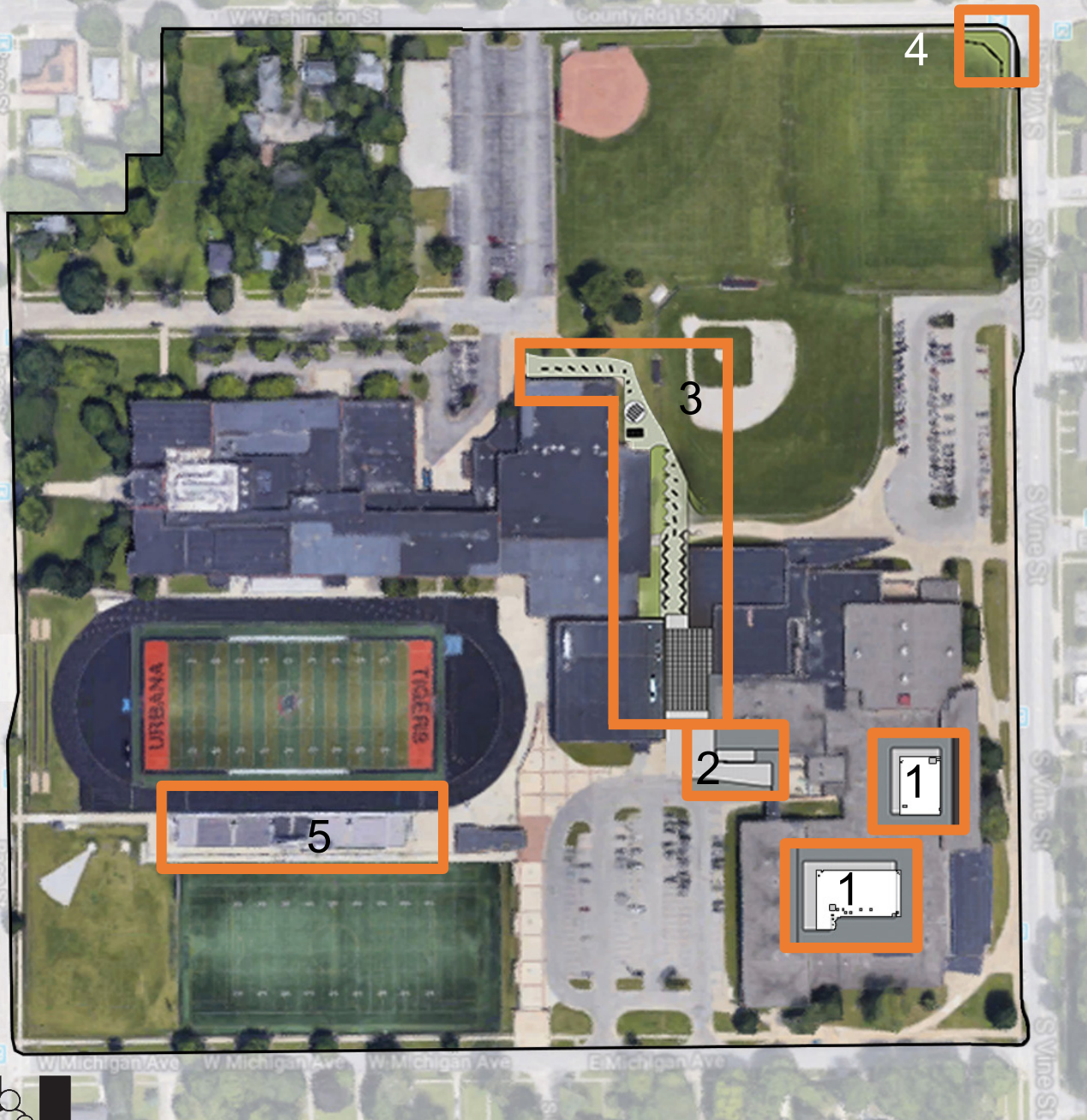




# Individual Options - Improvements

1.	Roofed Courtyards	\$2,070,000
2.	Service Enclosure	\$70,000
3.	Streetscape Atrium	\$5,700,000
4.	Campus Entry	\$60,000
5.	Bleacher Storage/Concessions	\$225,000

Preliminary Hard Cost Estimate: **\$8,125,000**





# Overall Estimates

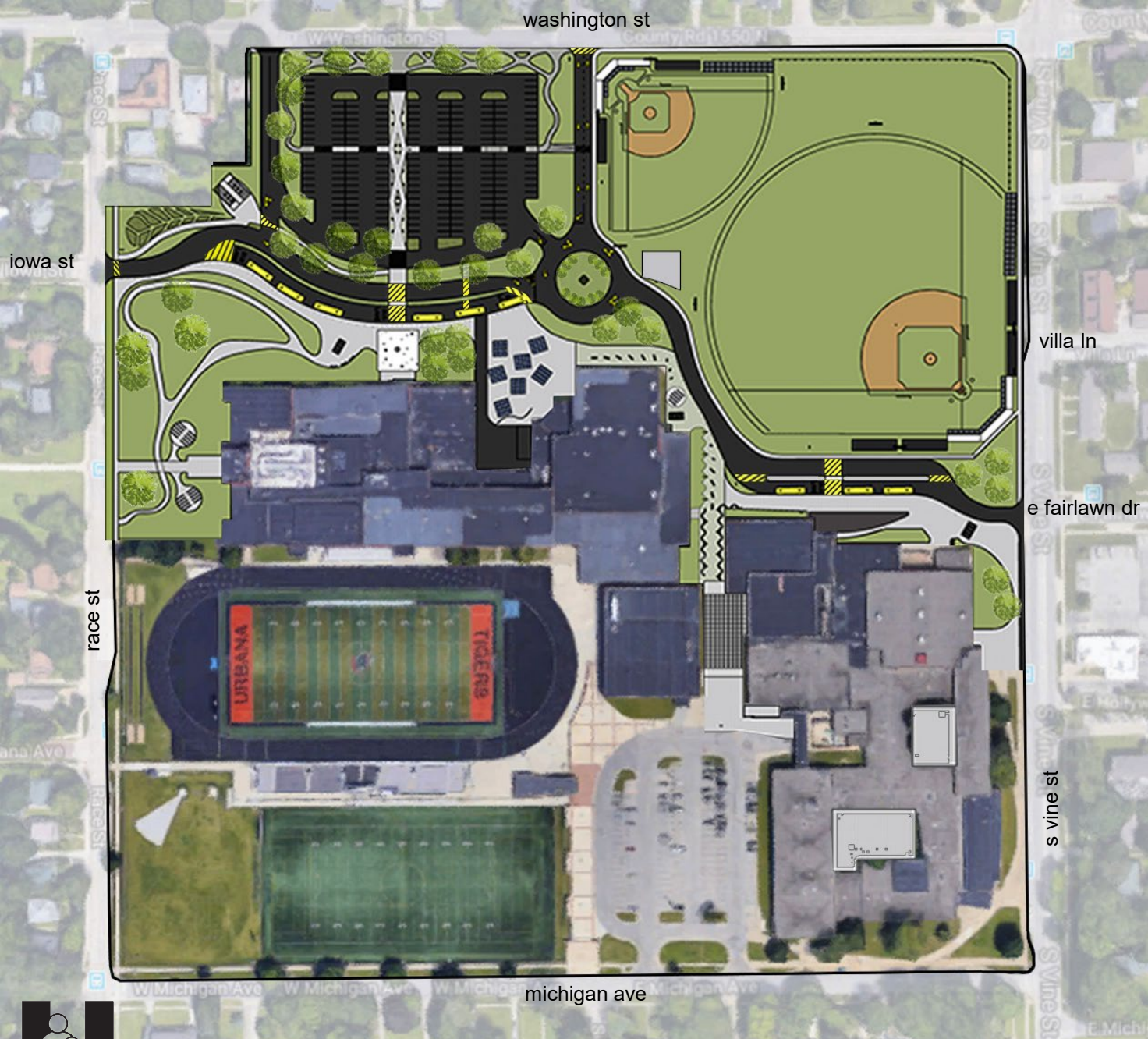
## Potential Phasing - North Campus Improvements

1.	Vehicular Access	\$2,800,000
2a.	North Campus Access/Parking	\$2,250,000
2b.	UHS Entry Presence	\$515,000
2c.	Tiger Lane Gateway	\$450,000
2d.	Educational Garden	\$40,000
2e.	North Learning/Storage	\$30,000
2f.	West Outdoor Learning	\$50,000
3.	Baseball	\$1,850,000
4.	Softball	\$1,250,000

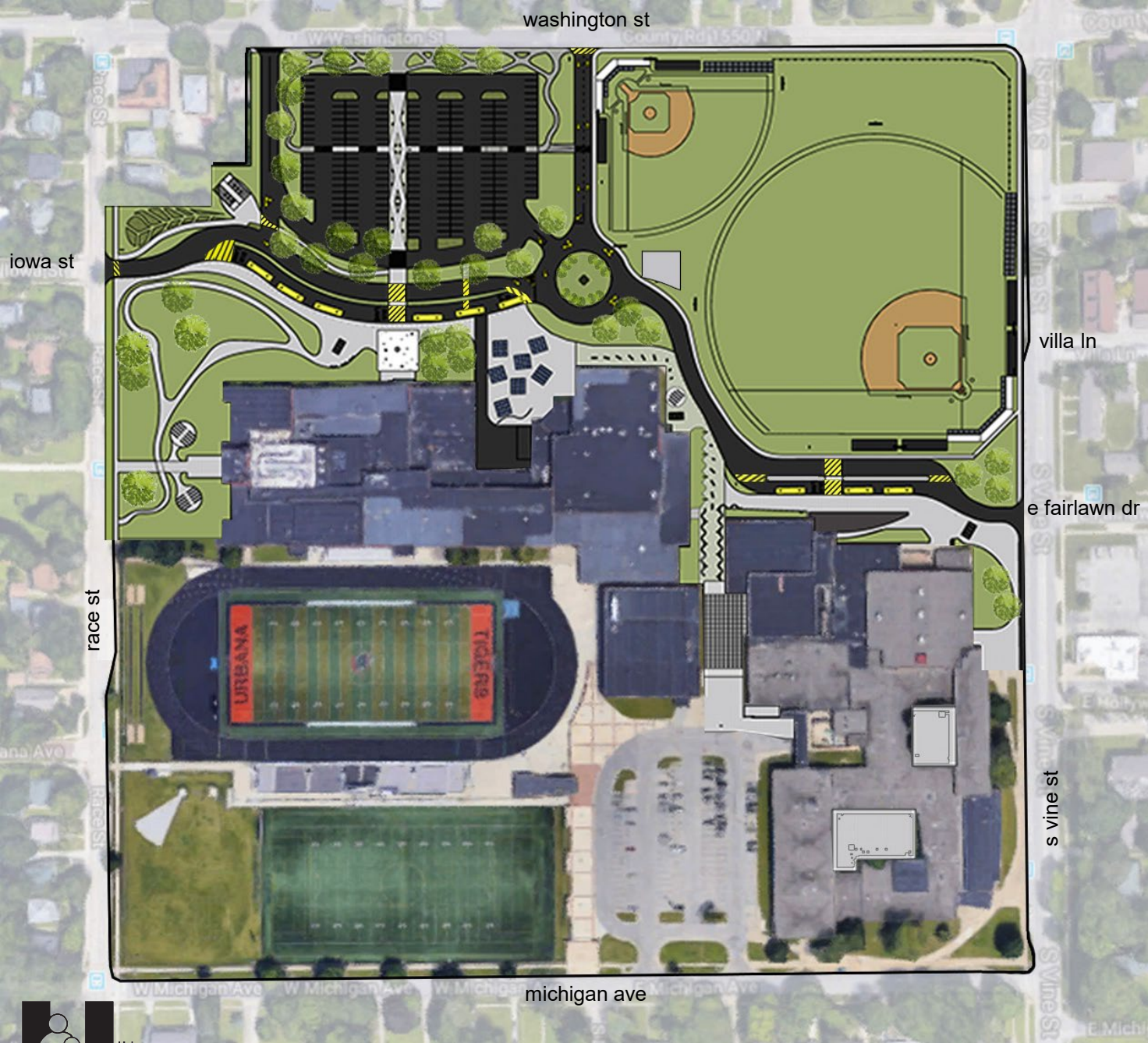
## Individual Options - Improvements

1.	Roofed Courtyards	\$2,070,000
2.	Service Enclosure	\$70,000
3.	Streetscape Atrium	\$5,700,000
4.	Campus Entry	\$60,000
5.	Bleacher Storage/Concessions	\$225,000

**Preliminary Hard Cost Estimate Total: \$17,460,000**







Questions?