

# Elementary Principals' Report

USD 116 Board of Education

June 4, 2019

- Dr. King
- Dr. Williams
- Leal
- Thomas Paine
- Wiley
- Yankee Ridge

## Academics: Dr. Martin Luther King Elementary School

- ❖ Phonics program that was piloted in second grade helped improve the foundations of reading.
- ❖ Preschool had 5th grade reading buddies.
- ❖ Three genres of writing: narrative, opinion, informational.
- ❖ ilab established for students to create, design, imagine, and implement their ideas



Areas for Growth include:

- ❖ Peer-to-peer observations
- ❖ Professional development to increase use of the ilab.

## School Improvement Plan Update: Dr. Martin Luther King Elementary School

**Goal #1: To improve our students on level, reading fluently. Result: three grade levels improved from fall to spring. Growth gains on ave: 3.28%.**

- Celebrated more conversations across grade levels to improve reading fluency, Prek-5.
- Need to start guided reading immediately.
- SIP goal needs to be divided between intermediate and primary.

**Goal #2: Create a behavior system that represents all racial groups equitably resulting in an increase in student engagement.**

**Highlights:**

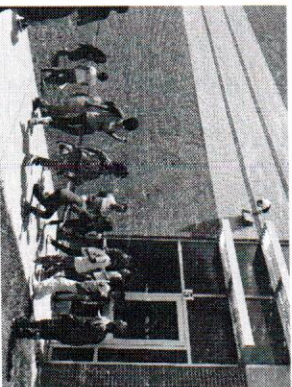
- Lower class sizes
- Morning Meetings
- PBIS Moodah
- Relationships with families
- Second Step

Discipline needs to be consistent across all classrooms.



## Discipline Data Update: Dr. Martin Luther King Elementary School

- ❖ Discipline is the responsibility of All Staff.
- ❖ Tier 1- 80% (0-1 ODRs)
- ❖ Tier 2- 14% (2-5 ODRs)
- ❖ Tier 3- 6% (6+ ODRs)
- ❖ Expectations need to be continually reviewed in all locations and taught to all students multiple occasions.
- ❖ Provide academic, social-emotional support for the 10 students who make up 45% of the referrals given. These students have 10 or more referrals.



## Family Engagement: Dr. Martin Luther King Elementary School

- Back to School Night
- Dads and Donuts
- Family Reading Night
- NAAPID
- College and Career
- Moms and Muffins
- Band Concerts
- Science Fairs
- Math/Science Night
- P.T.O.
- Cook out
- Eureka math videos to assist parents at home with their child.

-Find more ways to improve communication and awareness of school events.

-Need more family participation. King will be piloting the Remind App.



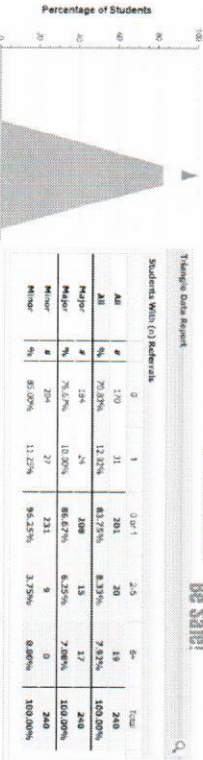
## Discipline Data Update: Wiley Elementary School

### GOAL 1: Restorative Practice and Equity in Student Discipline

Triangle Data Report  
2018-19

5 or More Offs  
2 to 5 Offs  
0 to 1 Offs

**BIG 3!**  
Be Respectful!  
Be Responsible!  
Be Safe!



Tier I (0 to 1) = 201 students = 84%  
Tier II (2 to 5) = 20 students = 8%  
Tier III (6+) = 19 students = 8%

**Restorative Practices**  
**Racial Equity Training**

## School Improvement Plan Update: Wiley



**GOAL 1: Restorative Practice and Equity in Student Discipline**  
Use of Restorative Practice Decrease racial disparity in student discipline data, increase student feelings of physical and emotional safety and student use of self-regulation and prosocial skills.

**GOAL 2: Student Literacy Excellence and Achievement**  
All students will improve their oral reading and comprehension. Goal for 80% of the students in the school will read at or above grade level based on both Fountas & Pinnell Benchmark Assessment System and AIMSweb Reading data. Fall 2018, 38% were on grade level.

**GOAL 3: Positive Student, Family, Community Engagement and Safety**  
All students are an important part of the Wiley community in which all community members feel accepted, respected and safe (physically and emotionally)- students, parents, families, and staff.

## Academics: Wiley Elementary School

### GOAL 2: Student Literacy Excellence and Achievement: BAS Spring 19

#### School Wide

B = 109/233 (47%)  
S = 21/233 (12%)  
I = 91/233 (42%)

B = Benchmark grade-level  
S = Strategic approaching  
I = Intensive well-below

	BAS Spring 19 Benchmark	BAS Spring 19 Strategic, Intensive	Wiley Percentage vs. Expected Growth
Kindergarten	B-16/30 (53%)	S-4/20 (13%) I-10/20 (53%)	Expected: 2 levels Wiley 2 = 100%
First	B-16/48 (33%)	S-9/48 (6%) I-29/48 (67%)	Expected: 5 levels Wiley 4.42 = 74%
Second	B-21/45 (47%)	S-4/45 (9%) I-20/45 (44%)	Expected: 3 levels Wiley 2.85 = 95%
Third	B-20/35 (57%)	S-8/35 (23%) I-7/35 (20%)	Expected: 3 levels Wiley 3.60 = 120%
Fourth	B-17/34 (50%)	S-7/34 (6%) I-15/34 (44%)	Expected: 3 levels Wiley 3.30 = 110%
Fifth	B-19/41 (46%)	S-6/41(15%) I-16/41 (39%)	Expected: 3 levels Wiley 2.37 = 79%

## Family Engagement: Wiley Elementary School

### GOAL 3: Positive Student, Family, Community Engagement and Safety

Essentials Parent Response Rate Increase from 4% (10 parents) in 2018 to **26% (65 parents) in 2019.**

- Parent Influence on Decision Making in the School = 52 (+20)
- Parent Involvement in School = 45 (+12) Parent-Teacher Trust = 29 (+13)

#### Strong Participation

- Open House
- 5 Family Nights
- Eat with a Loved One
- NAAPID

## Academics: Thomas Paine Elementary School

### Highlight:

- Collaboration with the PD Cadre, Literacy team, Instructional Coaches, School Improvement Team, and PBIS teams to support professional development of colleagues which impacts student learning.



### Areas for Growth:

- Engage in professional development and collaborate to utilize our MakerSpace, literacy and math curriculum in an effort to provide students integrated learning to prepare for 21st-Century learning.
- Analyze and interpret student data and make instructional decisions in response to student needs.

## School Improvement Plan Update:

- The percentage of students "meeting" grade level expectations on the BAS increased for every grade level from fall to spring
- One grade level had the largest growth in the area of mathematical computation.

### AREA OF GROWTH:

Consistently decrease the number of behavioral distractions in the classroom to increase the number of students performing at grade level. The goal is to have 85% of the student population at or above grade.



Thomas Paine  
Elementary School

## Discipline Data Update: Thomas Paine Elementary School

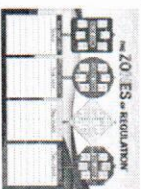
Discipline is the responsibility of all staff:

- Tier 1 - 76% (0 - 1)
- Tier 2 - 10% (2 - 5)
- Tier 3 - 14% (6+)



### AREA OF GROWTH:

Provide academic and social-emotional support for the 22 students who make up 61% of the referrals given. These students have 10 or more referrals.



## Family Engagement: Thomas Paine Elementary School

- Read and Treat
- Family Academic Support and Engagement (FASE)
- Back to School Night
- Assemblies
- Holiday Programs
- Fun & Field Day
- Book Fair
- PTA events: Carnival, Movie Night
- National African American Parent Involvement Day (NAAPID)
- Color Run
- Talent Show



Increase effective family engagement for students of different racial and ethnic backgrounds, abilities, and income levels.



## School Improvement Plan Update: Leal

GOAL 1: All students of color and economically disadvantaged students who attend Leal for at least 85% of the school year will be at or above grade level for reading benchmarks.

Grade	Percentage
K:	43%
1:	48%
2:	42%
3:	34%
4:	48%
5:	49%

GOAL 2: Students will demonstrate mastery (80% or better) of grade level specified math facts -- all students. (percentage)

Grade	A+	S-	Mx	D <sub>+</sub>
K:	72	47		
1:	82	82		
2:	68	28		
3:	51	10	51	
4:	85	77	66	66
5:	98	93	91	85

## Academics: Leal

BAS Data: % at/above Spring Benchmark

Grade	1-DL	2-DL	3-DL	4-DL	5-DL
K-Mono	54				
1-Mono	58	1-DL	63		
2-Mono	60	2-DL	66		
3-Mono	53	3-DL	67		
4-Mono	70	4-DL	25		
5-Mono	61	5-DL	61		

- Over 50% of students learning in a second language
  - English literacy instruction for students in DL begins in 3rd grade
- AREAS FOR GROWTH:
- Continued implementation of Balanced Literacy with fidelity in all classrooms
  - Protocol for determining most effective language of intervention
  - Development of appropriate benchmarks for students learning a second language

## Discipline Data Update: Leal

### Highlights

- Discipline is the responsibility of all staff
  - Tier 1: 94.3% (0-1 ODRs)
  - Tier 2: 4.2% (2-5 ODRs)
  - Tier 3: 1.5% (6+ ODRs)
- Yearly YOP goal of 16,000 reached on May 7, 2019

### Areas for Growth

- Teaching school-wide expectations to students and parents new to Leal
- Focus on Respect for Property SEL done with fidelity in all classrooms

## Family Engagement: Leal

### Highlights:

- K-2 and 3-5 Family Math and Reading Nights
- Family home access to learning resources: Raz-Kids, Reading Eggs (reading), Zearn, Prodigy (math) through classrooms; Pebble Go (science), Worldbook
- Encyclopeda On-Line through Leal Library
- D.E.A.R. reading program
- Class Dqgr, Class Tag communication platforms

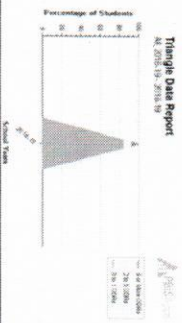
### Areas to Grow:

- Improve 2-way school/home communication through selection and schoolwide use of common social media platform (i.e.: ClassTag)

## Discipline Data Update: Dr. Williams Elementary School

### Areas to Highlight:

We had 380 students who met school-wide expectations all day every day receiving **zero** ODRs!  
 85.04% Tier 1 (0-1 ODR)  
 8.61% Tier 2 (2-3 ODRs)  
 6.35% Tier 3 (4+ ODRs)  
 Overall decrease of 135 referrals for the school year.



### Areas for Growth:

Provide Social Academic Instructional Groups for the 30 students who received 6 or more referrals. (Tier 2 intervention)  
 ~ Within the groups model and practice using calming strategies, utilize role playing and problem solve scenarios that occur within the classroom teaching targeted social skills.  
 ~ Continually implement PBIS & SEL with fidelity in all classrooms and school settings.

## School Improvement Plan Update: Dr. Williams Elementary School

### Student Focused Academic Goal:

Students will be able to create pieces of writing on a variety of topics across different genres using the process developed in Writer's Workshop. Students will learn to evaluate and critique their writing.

- ~ Staff worked collaboratively throughout the school year on unified writing PD, staff looked at student samples, analyzed results and documented student progress in an universal way using our Writing Data Drive, documenting student growth.
- ~ Monthly writing professional development provided to all staff on each genre of writing narrative, opinion and informative writing. Grade level collaboration times allowed ongoing discussions regarding areas of success as well as areas of support within the writing units.

### Student Focused Social Emotional & Behavioral Goal:

The amount of time students are in the classroom will be maximized and we will create a behavior system that does not over represent any racial group.  
 ~ Staff were introduced to restorative approaches to student behaviors. Staff used de-escalation techniques within the classroom in order to support students.  
 ~ Students had opportunities to use calming boxes within the classroom in order to problem solve and prevent a referral.  
 ~ SEL taught to all students from 8:30-9:00 using the Morning Meeting structure & Second Step.

### Areas for Growth:

Continue the usage of the Writing Data Drive in order to demonstrate student growth over time.  
 Continue unified professional development with staff aligning the Daily 5 Balanced Literacy Framework and Writer's Workshop providing students opportunities to write across the curriculum.

### Areas for Growth:

Additional training and professional development using restorative practices as well as trauma informed practices. Continued implementation of PBIS structure using school-wide expectations: respect yourself, respect others and respect property.  
 Referrals will match the gender and racial demographics of the school.



## Academics: Dr. Williams Elementary School

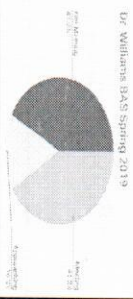
### Areas to Highlight:

~ 58.1% of students are at or approaching benchmark  
 ~ Primary support 2 days per week by retired teachers

Grade Level	% of students "on level" at Spring Benchmark
K	33.33%
K-DL	32.65%
1	32.56%
1-DL	31.43%
2	48.84%
2-DL	42.31%
3	51.43%
3-DL	10.71%
4	74.42%
4-DL	26%
5	60.47%
5-DL	29%

### Areas for Growth:

~ Intermediate DL classes have a significantly lower percentage of students meeting than their monolingual counterparts. (data shows Spanish growth, does not include growth in English.)  
 ~ Kindergarten data shows that K classes will need significant support and instruction in 1st grade.  
 ~ Increase support for DL classes through the usage of a retired teacher, America Reads/America Counts tutors to increase Spanish literacy support.  
 ~ Targeted intervention groups beginning first day of school for all Tier 3 students in monolingual and dual language.  
 ~ Increase Spanish literacy resources using IL Empower Funds.



## Family Engagement: Dr. Williams Elementary School

- Areas to Highlight:**
- Back to School Night
  - Character Trait Breakfast Celebrations
  - Muffins with Mom
  - Donuts with Dad
  - Quarterly Parent Newsletter
  - Quarterly Parent Advisory Committee
  - NAAPID
  - Fire Arts Night, Third Grade Fashion Show 5th
  - Grade Musical
  - Supper & Science
  - ASCCP Community Events
  - SPLASH Jr. Celebrations
  - School Yearbook
  - Supportive PTA
  - Fun & Field Day
  - Staff Appreciation Celebrations & Dinner's
  - T-Shirts for all fifth grade students
  - Friendship Dance

**Areas for Growth:**

Increase usage of social media as a way to engage and inform parents of evening events and activities.

Utilize Chromecast multimedia at the entrance of the building to continuously inform parents about upcoming events and activities.

Consistent usage of Class Dojo as a school-wide communication tool informing parents of upcoming events and activities.



## School Improvement Plan Update: Yankee Ridge

**School Improvement Goal 1- Social Emotional Learning:** All students will develop self-management skills and feel connected to the school community, so they can feel empowered to manage their emotions and make positive choices.

Highlights: Daily classroom Morning Meetings, Weekly Community Assemblies, Second Step instruction, strong student / teacher relationships, and our "turnaround kids."

**Areas for Growth Goal 1:**

Continue to unite as a staff to define building-wide behavioral expectations and actively teach students these expectations.

Continue to explore and implement clearly defined consequences and Restorative Practices.

**School Improvement Goal 2- Reading Achievement:** Reading achievement will improve for all students, especially for those students that began the year reading below the grade level expectation.

Highlights: Strong guided reading instructional practices established, quality reading intervention provided, volunteer and student led reading support, and a successful first year of French Dual Language

**Areas for Growth Goal 2:**

Continue to improve with the use of reading assessment data to guide and modify instruction.

Continue to improve with all aspects of the Balanced Literacy Framework, including writing instruction.

## Academics: Yankee Ridge

Percent of students on grade level	Average levels of growth per grade level
K - 73% (No DL)	K - 2.33 levels gained (2 levels expected)
1 - 48% (No DL)	1 - 5.13 levels gained (6 levels expected)
2 - 44%	2 - 3.67 levels gained (3 levels expected)
3 - 66%	3 - 4.44 levels gained (3 levels expected)
4 - 57%	4 - 2.47 levels gained (3 levels expected)
5 - 71%	5 - 2.66 levels gained (3 levels expected)

**Areas for Growth:**

Continue to prioritize differentiated and adjusted reading instruction for students.

Maintain intervention provided by an adequate number of interventionist (3 currently).

Incorporate and align more writing into our students' literacy development.

Target specific students and grade levels for reading needs.

## Discipline Data Update: Yankee Ridge

- Percentage of students receiving ODRs:
  - Tier 1- 78.3% (0-1 ODRs)
  - Tier 2- 10.25% (2-5 ODRs)
  - Tier 3 - 11.44% (6+ ODRs)
- Overall, we have seen a slight decrease in ODRs from this school year to last school year.
- The number of ODRs for "disrespect" was reduced by 50% this school year.
- Provide academic and social-emotional support for the 30 students who received 10 or more ODRs. These 30 students account for 80 percent of all referrals written.
- Continue to implement and improve PBIS systems.

## Family Engagement: Yankee Ridge

- Active and supportive PTA
    - Movie Nights
    - Fine Arts Night
    - Climbing Wall
    - Community Dinner s/Potlucks
    - Jr. Scientist Day
  - Quarterly Principal's Advisory Committee
  - NAAPID
  - Friday Community Assemblies
  - Bring a Friend to Lunch Days
  - Read and Treat Night
  - French Dual Language Potluck and Informational events.
  - FDL Parent Liaison
  - Social Media Posts
- Areas for Growth
- Administration will sponsor morning coffee time with parents.
- Increase effective family engagement for students of different language, racial, ethnic backgrounds, abilities, and income levels.

## Structures for Student Learning

Desired State: All elementary buildings will have the resources and personnel to support all students academically, socially, emotionally, and behaviorally.

We look forward to working with Dr. Ivory-Tatum and her administrative team to accomplish this goal over the next few years

## Questions?

