

Dual Language (DL) in USD 116 for 2012-2013

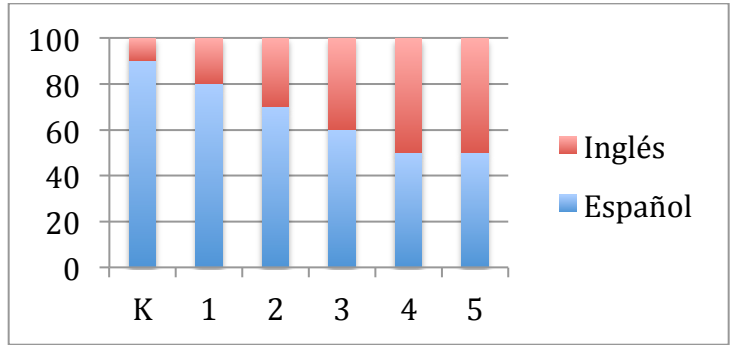
90/10 Dual Language Program Model

A range of:

1-2 Kindergarten DL classes at Leal
1-2 First Grade DL classes at Leal

1-2 Kindergarten DL classes at Prairie
1-2 First Grade DL classes at Prairie

Year	Leal	Prairie
2012-2013	K-1	K-1
2013-2014	K-2	K-2
2014-2015	K-3	K-3
2015-2016	K-4	K-4
2016-2017	K-5	K-5



- A range of 1-2 classrooms of Dual Language at both schools at each grade level.
- All native Spanish-speaking students will have the opportunity to enroll in DL as their main Bilingual Education Program.
- English-speaking students will have the opportunity to enroll in the DL classrooms at Leal and Prairie.
- Based on enrollment numbers of Spanish-speaking students who choose the DL program AND the number of English speaking students who have applied into the DL program at both schools, the administration will decide on the number of DL classrooms. The administration will seek BOE approval for additional classrooms (if a net gain of FTE is required). This decision will be based on a variety of factors including: enrollment numbers, school and staff readiness, etc.
- DL will be open to entire district via the petition process if spots are available.

Rationale

- 90/10 was the agreed upon model by the committee as it is preferred pedagogically for all students for bilingualism, biliteracy, and long-term academic achievement, as demonstrated by program evaluation research. There is also sufficient parental support for this model, and we envision this to continue to improve as we hold parental education meetings.
- Both Leal and Prairie have the physical structure in place for at least one classroom of K-5 Dual Language over time.
- Community buy-in is critical to successful DL programs.

Important Information

- DL Advisory Committee Meeting
 - **Next meeting will be: March 29 at 7pm, Central Office Board Room**
- The DL Advisory Committee is advising the DL program development with: “Guiding Principles for Dual Language” by the Center for Applied Linguistics
 - Assessment and Accountability
 - Curriculum
 - Instruction
 - Staff Quality and Professional Development
 - Program Structure
 - Family and Community
 - Support and Resources
- Program procedures related to DL are currently being drafted and will be posted on the DL website.
- **DL Parent Forums:**
 - **Tuesday, March 13, 7pm at Prairie School**
 - **Monday, March 26, 6pm at Leal School**
- DL student applications will be due on **April 20, 2012**. Applications can be submitted at Kindergarten registration on April 3, 2012 OR to the Leal or Prairie School offices.
- Incoming Spanish speaking families to Prairie will have parent tours at Prairie School
- DL School Visits for small group of stakeholders:
 - April 5th: Elgin U-46
- DL workshop with the Illinois Resource Center:
 - April 2012

For detailed information about the DL programs, please see the DL brochure, attend the DL forums, and/or contact:

Joe Wiemelt
Director of Bilingual Programs
Urbana School District 116
217-384-3650
jwiemelt@usd116.org