

Preschool for All Expansion Grant

Urbana Board of Education
June 5, 2018



Key Components of Preschool Expansion

- **Expand high-quality preschool programs in high-need communities**
- **Full day blended classrooms**
- **Majority of students must be four-years-old**
- **Create sustainable programs by coordinating existing early learning funds**

Emphasizing

- **Alignment of preschool programs with birth-through-third-grade continuum of services**
- **Supports for Mental Health and wellness of children/families**
- **Supporting Family Goals**
- **Community Collaboration**

Advantages of Yankee Ridge

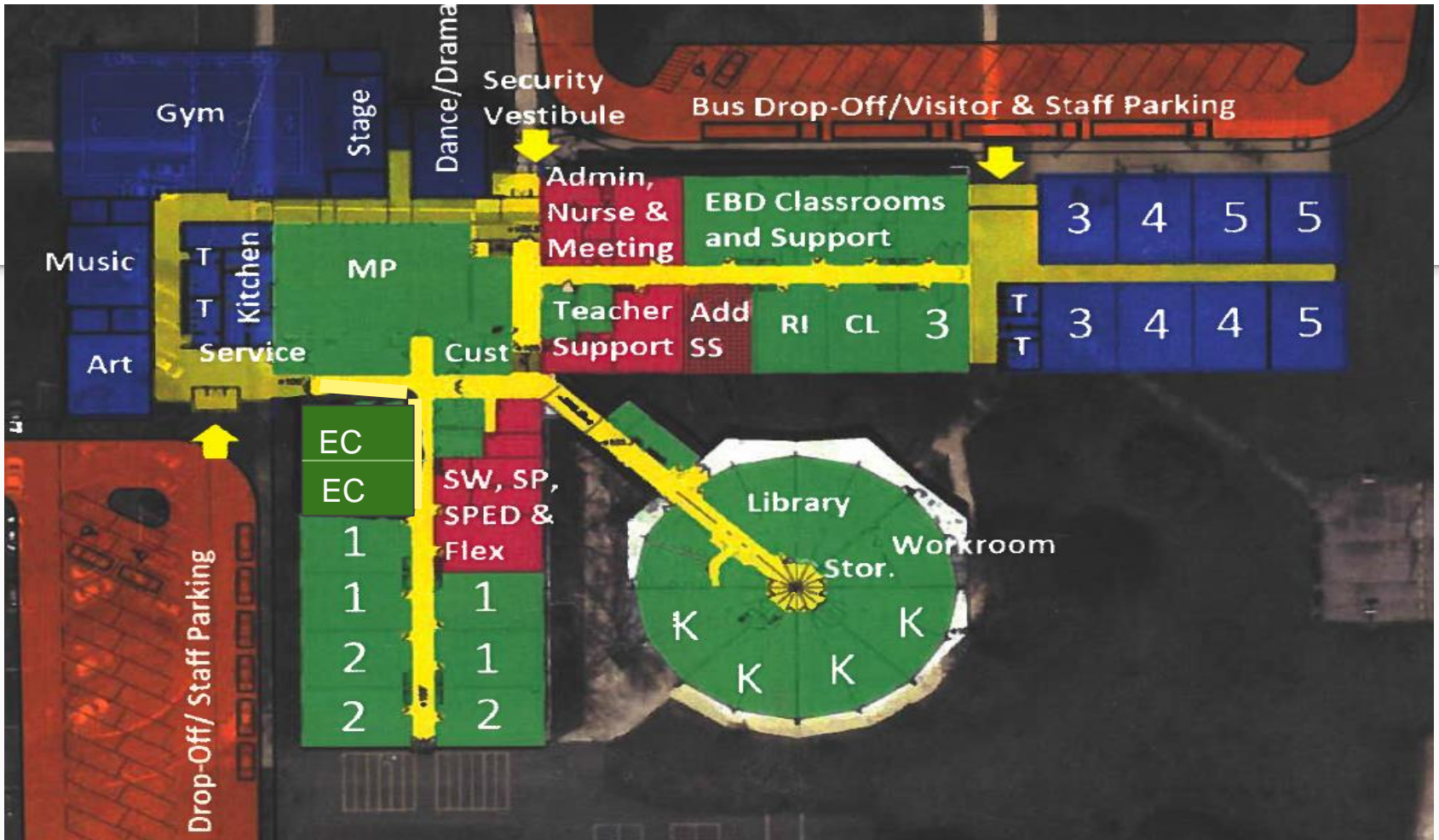
New Opportunities:

- **Alignment and efficiency of services for Francophone families/classrooms**
- **Share physical resources and personnel such as secretary, playground equipment, mental health specialist, French speaking family coordinator**

Advantages of Yankee Ridge

New Opportunities:

- Shared professional development activities
- Yankee Ridge PreK students in a building with their siblings
- Smooth transition for 4 year olds into Kindergarten



Sample Schedule

- 8:10 Arrival, Breakfast
- 8:35 Large Group Meeting (Music, Calendar, etc.)
- 8:50 Center Time
- 10:00 Outside/Gym Play
- 10:30 Small Group Instruction
- 10:55 Lunch
- 11:25 Rest Time/Quiet Centers
- 12:30 Outside/Gym Time
- 1:00 Center Time/Snack
- 2:05 Story/Drama
- 2:25 Large Group Meeting
- 2:45 Prepare for Departure

